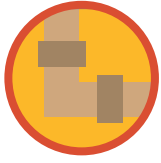




CONCERNED ABOUT LEAD IN YOUR DRINKING WATER?

# Sources of LEAD in Drinking Water



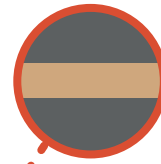
**Copper Pipe with Lead Solder:** Solder made or installed before 1986 contained high lead levels.



**Faucets:** Fixtures inside your home may contain lead.



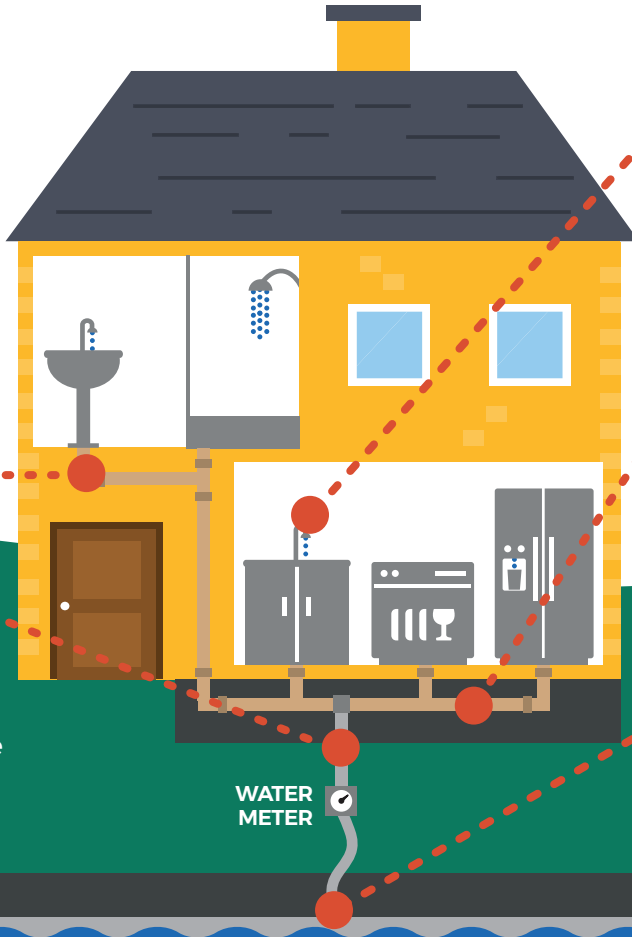
**Lead Service Line:** The service line is the pipe that runs from the water main to the home's internal plumbing. Lead service lines can be a major source of lead contamination in water.



**Galvanized Pipe:** Lead particles can attach to the surface of galvanized pipes. Over time, the particles can enter your drinking water, causing elevated lead levels.



**Lead Goose Necks:** Goose necks and pigtails are shorter pipes that connect the lead service line to the main.



## Reduce Your Exposure To Lead



Use only cold water for drinking, cooking and making baby formula. *Boiling water does not remove lead from water.*



Regularly clean your faucet's screen (also known as an aerator).



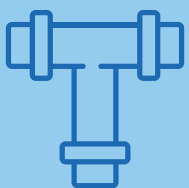
Consider using a water filter certified to remove lead and know when it's time to replace the filter.



Before drinking, flush your pipes by running your tap, taking a shower, doing laundry or a load of dishes.

To find out for certain if you have lead in drinking water, **have your water tested.**

## Replace Your Lead Service Line



Water systems are required to replace lead service lines if a water system cannot meet EPA's Lead Action Level through optimized corrosion control treatment.

Replacement of the lead service line is often the responsibility of both the utility and homeowner.

Homeowners can contact their water system to learn about how to remove the lead service line.

## Identify Other Lead Sources In Your Home

Lead in homes can also come from sources other than water. If you live in a home built before 1978, you may want to have your paint tested for lead. **Consider contacting your doctor to have your children tested if you are concerned about lead exposure.**



For more information, visit: [epa.gov/safewater](https://www.epa.gov/safewater)